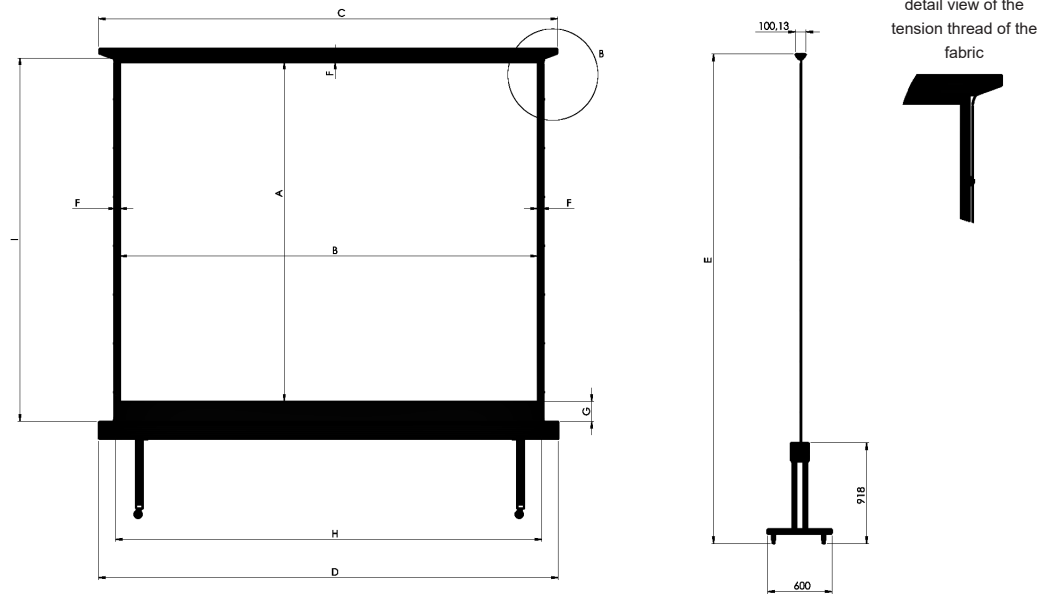


Front and profile views

- A Image height
- B Image base
- C Weighing bar length
- D Overall casing length
- E Overall height
- F Black borders
- G Black drop
- H Length on the fabric
- I Height of the fabric



Back

Detail



The PANTOSCREEN WITH CASING screen is equipped with a housing and a pantograph mechanism at the back.

- 17/17cm square section aluminium casing and double frame tube, colour: white, RAL 9003
- Black-out matt white tensioned fabric, black borders
- The pantograph system offers a good flatness of the projection surface
- The top bar closes the casing when the screen is retracted and is equipped with an integrated screen surface equalization mechanism
- An equalization mechanism for the angle of inclination of the pantographs ensures that the pantographs are parallel on the back when descending or climbing the screen and prevents twisting.
- Safety stop of the winding mechanism when the housing is closed
- Up/down switch included
- Option: roller feet

Technical data

| Pantoscreen TENS/carter Reference | A cm | B cm | C cm | D cm | E cm | F cm | G cm | H cm | I cm |
|-----------------------------------|------|------|------|------|-------|------|------|------|------|
| PA3B4145232169240CC | 145 | 232 | 269 | 270 | 263,2 | 4 | 20 | 240 | 169 |
| PA3B4164262188270CC | 164 | 262 | 299 | 300 | 282,2 | 4 | 20 | 270 | 188 |
| PA3B4183292207300CC | 183 | 292 | 329 | 330 | 301,2 | 4 | 20 | 300 | 207 |
| PA3B4214342238350CC | 214 | 342 | 379 | 380 | 332,2 | 4 | 20 | 350 | 238 |

Chemin de Beaurepaire
91410 DOURDAN - FRANCE
Tel +33 1 64 59 94 54