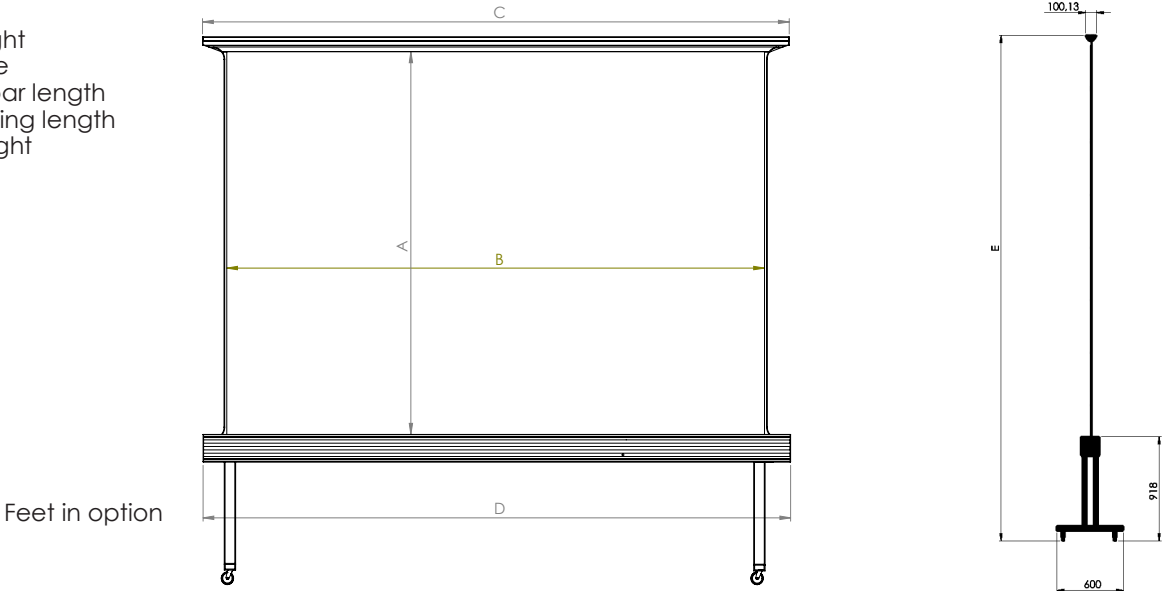


Front and profile views

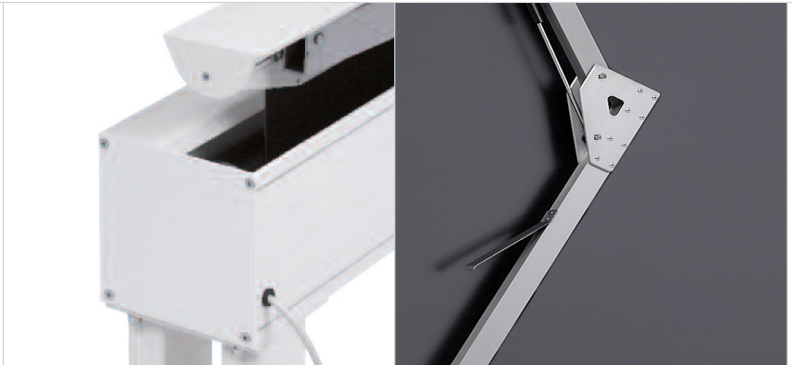
- A Image height
- B Image base
- C Weighing bar length
- D Overall casing length
- E Overall height



Back



Detail



Technical data

Pantoscreen Pro/carter Reference	A cm	B cm	C cm	D cm	E cm
PA1B4180240180240PC	180	240	259	260	274,2
PA1B4202270202270PC	202	270	289	290	296,2
PA1B4225300225300PC	225	300	319	320	319,2
PA1B5300400300400PC	300	400	419	420	394,2

The PANTOSCREEN WITH CASING screen is equipped with a housing and a pantograph mechanism at the back.

- 17/17cm square section aluminium casing and double frame tube, colour: white, RAL 9003
- Black-out matt white fabric
- The pantograph system offers a good flatness of the projection surface
- The top bar closes the casing when the screen is retracted and is equipped with an integrated screen surface equalization mechanism
- An equalization mechanism for the angle of inclination of the pantographs ensures that the pantographs are parallel at the back when opening or closing the screen and prevents twisting.
- Safety stop of the winding mechanism when the housing is closed
- Up/down switch included
- Option: roller feet

Chemin de Beaurepaire
91410 DOURDAN - FRANCE
Tel +33 1 64 59 94 54